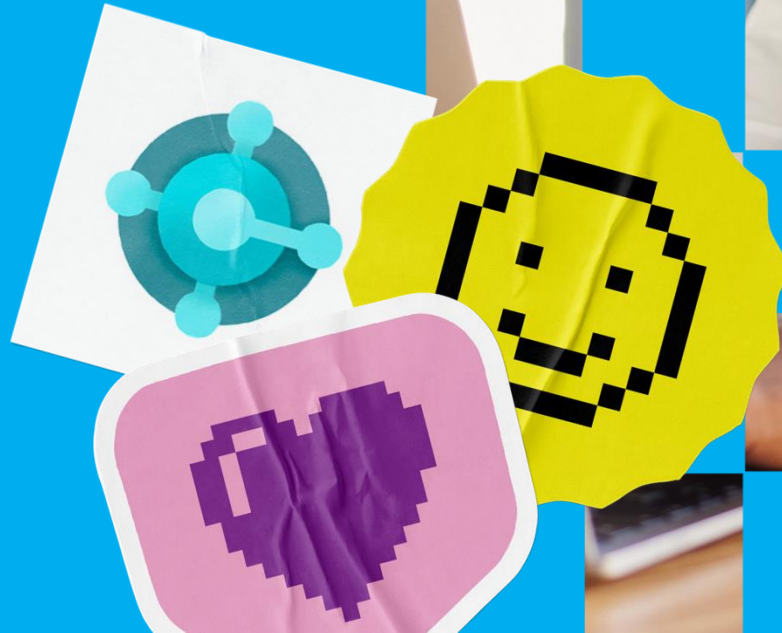


**INFINITY
GROUP**

ERP Battlecards_

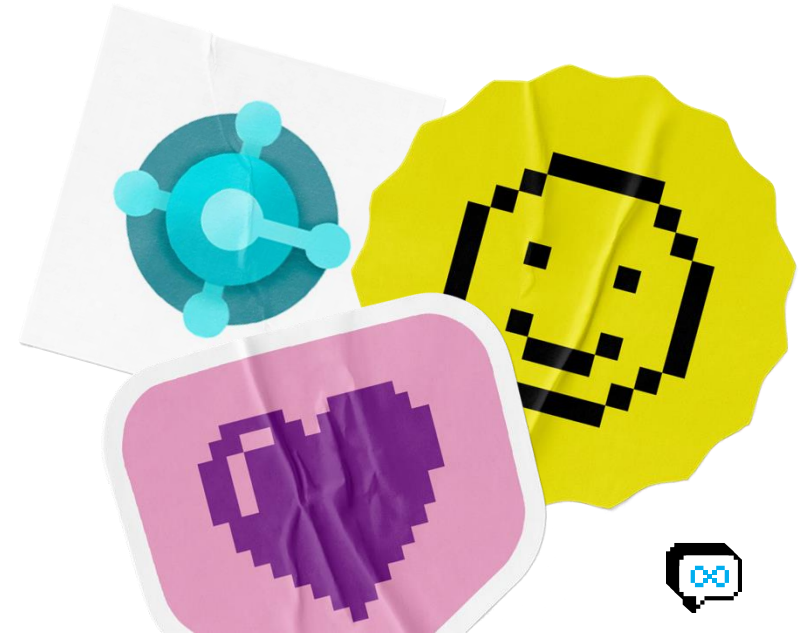


Business Central vs...

VS

Just click which ERP you want to see compared to Business Central!

- [Oracle NetSuite](#)
- [Sage Intacct](#)
- [SAP Business One](#)
- [ERPNext](#)
- [Katana](#)
- [Acumatica](#)
- [SYSPRO](#)
- [QT9](#)
- [Xero](#)
- [Workday](#)
- [Infor ERP](#)





Microsoft Dynamics 365 Business Central

Key features:

- Financial Management
- Human Capital Management
- Supply Chain Management
- CRM
- Project Management
- Advanced customisation options
- AI-powered insights
- Automation
- IoT integration
- Advanced analytics

From
**£57.50 -
£82.20**
per user,
per month
(free trial
available)

Pros

- Integration with Microsoft and third-party tools
- User-friendly interface
- Scalable as your business grows
- Advanced customisation options
- Robust reporting
- AI-powered

Cons

- A general ERP, meaning it may not be as in-depth in specific areas as a specialised solution
- Learning curve for those not familiar with Microsoft

Ideal for:

- SMBs seeking a scalable, customisable ERP



ORACLE® NETSUITE

Key features:

- Financial Management
- Human Capital Management
- Supply Chain Management
- CRM
- Project Management
- Good customisation options
- AI-powered insights
- Automation
- IoT integration
- Advanced analytics

From
£76
per user,
per month
+
base fee
of
£770
per month

Pros

- A comprehensive set of features
- Scalable to handle large volumes of data
- Advanced analytics and reporting
- Strong integration with e-commerce platforms

Cons

- One of more expensive ERPs on the market
- Some customisation options will cost you extra, preventing flexibility
- It can be complex to use, especially if you haven't used Oracle products previously
- Some of the accounting features are reported to be lacklustre

Ideal for:

- Comprehensive ERP, with a large budget to invest





Microsoft Dynamics 365 Business Central

Key features:

- Financial Management
- Human Capital Management
- Supply Chain Management
- CRM
- Project Management
- Advanced customisation options
- AI-powered insights
- Automation
- IoT integration
- Advanced analytics

From
**£57.50 -
£82.20**

per user, per
month (free trial
available)

Pros

- Integration with Microsoft and third-party tools
- User-friendly interface
- Scalable as your business grows
- Advanced customisation options
- Robust reporting
- AI-powered

Cons

- A general ERP, meaning it may not be as in-depth in specific areas as a specialised solution
- Learning curve for those not familiar with Microsoft

Ideal for:

- SMBs seeking a scalable, customisable ERP

sage Intacct



Key features:

- Financial Management
- Human Capital Management
- Supply Chain Management
- CRM
- Some Project Management tools
- Good customisation options
- AI-powered insights
- Automation
- Advanced analytics



Not publicly
available

Pros

- On the more affordable end of ERPs
- Offers robust financial management capabilities
- Strong customisation options, particularly through integrations
- Good level of automation

Cons

- If you grow out of the 'mid-sized' range, it becomes difficult to scale the system
- Advanced features are limited
- Some reporting features are also limited
- The interface is somewhat dated

Ideal for:

- Medium-sized business seeking good financial management features and customisation





Microsoft Dynamics 365 Business Central

Key features:

- Financial Management
- Human Capital Management
- Supply Chain Management
- CRM
- Project Management
- Advanced customisation options
- AI-powered insights
- Automation
- IoT integration
- Advanced analytics

From
**£57.50 -
£82.20**

per user, per
month (free trial
available)

Pros

- Integration with Microsoft and third-party tools
- User-friendly interface
- Scalable as your business grows
- Advanced customisation options
- Robust reporting
- AI-powered

Cons

- A general ERP, meaning it may not be as in-depth in specific areas as a specialised solution
- Learning curve for those not familiar with Microsoft

Ideal for:

- SMBs seeking a scalable, customisable ERP

SAP Business One

Key features:

- Financial Management
- Some Human Capital Management tools
- Supply Chain Management
- CRM
- Project Management
- Some customisation options
- Some automation
- Advanced analytics

From
**£76 -
£101**

per user,
per month
(free trial
available)

Pros

- Scalable for large businesses
- Robust functionality and features to address a wide range of needs
- Real-time data
- Vast visual reports

Cons

- Some features are reportedly slow
- One of the pricier ERPs
- Can be complex and difficult to learn
- Customer support is varied

Ideal for:

- Larger organisations, requiring a complex ERP system and have the budget to invest





Microsoft Dynamics 365 Business Central

Key features:

- Financial Management
- Human Capital Management
- Supply Chain Management
- CRM
- Project Management
- Advanced customisation options
- AI-powered insights
- Automation
- IoT integration
- Advanced analytics

Pros

- Integration with Microsoft and third-party tools
- User-friendly interface
- Scalable as your business grows
- Advanced customisation options
- Robust reporting
- AI-powered

Cons

- A general ERP, meaning it may not be as in-depth in specific areas as a specialised solution
- Learning curve for those not familiar with Microsoft

Ideal for:

- SMBs seeking a scalable, customisable ERP

From
**£57.50 -
£82.20**

per user, per
month (free trial
available)

ERPNext

Key features:

- Financial Management
- Some Human Capital Management tools
- Supply Chain Management
- CRM
- Some Project Management tools
- Good customisation options
- Some automation
- AI-powered insights
- Basic reporting

Pros

- It's free!
- Good customisation options
- User-friendly interface

Cons

- The customisation can make the system difficult to implement and complex to manage
- Significant learning curve to be able to develop your system
- Limited customer support, which can make it challenging to get the answers you need
- Not built for more complex needs

Ideal for:

- Small businesses who have limited budget for their ERP and highly specific needs, but have a good technical team to develop it themselves

Free
(but you need to
customise/develop
yourself)

VS



Microsoft Dynamics 365 Business Central

Key features:

- Financial Management
- Human Capital Management
- Supply Chain Management
- CRM
- Project Management
- Advanced customisation options
- AI-powered insights
- Automation
- IoT integration
- Advanced analytics

From
**£57.50 -
£82.20**

per user, per
month (free trial
available)

Pros

- Integration with Microsoft and third-party tools
- User-friendly interface
- Scalable as your business grows
- Advanced customisation options
- Robust reporting
- AI-powered

Cons

- A general ERP, meaning it may not be as in-depth in specific areas as a specialised solution
- Learning curve for those not familiar with Microsoft

Ideal for:

- SMBs seeking a scalable, customisable ERP



Key features:

- Some Financial Management tools
- Some Human Capital Management tools
- Supply Chain Management
- Some CRM tools
- Some Project Management tools
- Good customisation options
- Some automation
- Advanced analytics

From
**£137 -
£615**
per month

Pros

- Straightforward and easy to use
- Integrations with a diverse range of popular applications
- Offers real-time inventory updates
- Feature-rich for manufacturers

Cons

- As it's focused on manufacturing, there is limited features covering finance, HR and other core ERP areas
- It isn't the most scalable solution for larger organisations
- There isn't much capacity for custom integrations
- Limited automation

Ideal for:

- Small-medium manufacturers, who need a basic ERP to track inventory and related tasks

VS





Microsoft Dynamics 365 Business Central

Key features:

- Financial Management
- Human Capital Management
- Supply Chain Management
- CRM
- Project Management
- Advanced customisation options
- AI-powered insights
- Automation
- IoT integration
- Advanced analytics

Pros

- Integration with Microsoft and third-party tools
- User-friendly interface
- Scalable as your business grows
- Advanced customisation options
- Robust reporting
- AI-powered

Cons

- A general ERP, meaning it may not be as in-depth in specific areas as a specialised solution
- Learning curve for those not familiar with Microsoft

Ideal for:

- SMBs seeking a scalable, customisable ERP

From
£57.50 -
£82.20
 per user, per
 month (free trial
 available)




Acumatica

The Cloud ERP



Key features:

- Financial Management
- Human Capital Management
- Supply Chain Management
- CRM
- Project Management
- Good customisation options
- Some automation
- Advanced analytics



Not publicly available
 (flat price rather than
 per-user subscription)

Ideal for:

- Small-medium manufacturers, who need a basic ERP to track inventory and related tasks

Pros

- Highly customisable and tailored to specific industry needs
- Has a comprehensive suite of features covering core ERP areas
- Can scale easily with your business
- Good range of integration options

Cons

- Can be difficult to implement due to the high degree of customisation, especially for businesses with complex processes
- Smaller businesses may find themselves priced out
- May take time to learn how to use the system properly
- Features slightly less advanced than other ERPs



Microsoft Dynamics 365 Business Central



Key features:

- Financial Management
- Human Capital Management
- Supply Chain Management
- CRM
- Project Management
- Advanced customisation options
- AI-powered insights
- Automation
- IoT integration
- Advanced analytics

From
**£57.50 -
£82.20**

per user, per
month (free trial
available)

Pros

- Integration with Microsoft and third-party tools
- User-friendly interface
- Scalable as your business grows
- Advanced customisation options
- Robust reporting
- AI-powered

Cons

- A general ERP, meaning it may not be as in-depth in specific areas as a specialised solution
- Learning curve for those not familiar with Microsoft

Ideal for:

- SMBs seeking a scalable, customisable ERP

Key features:

- Some Financial Management tools
- Some Human Capital Management tools
- Supply Chain Management
- CRM
- Some Project Management tools
- Customisation options
- Some automation
- Advanced analytics

Around
£200
per user,
per month

Ideal for:

- Manufacturers and distributors, especially those with complex manufacturing processes and extensive inventory management needs

Pros

- A large range of in-depth features for manufacturers
- Integrates with many other core business applications
- Great forecasting and inventory management tools
- Good level of customisation options

Cons

- One of the more expensive ERPs
- Missing elements like HR, finance management and project management seen in other ERPs
- Not the most flexible in terms of customisation options

VS



Microsoft Dynamics 365 Business Central

Key features:

- Financial Management
- Human Capital Management
- Supply Chain Management
- CRM
- Project Management
- Advanced customisation options
- AI-powered insights
- Automation
- IoT integration
- Advanced analytics

From
**£57.50 -
£82.20**

per user, per
month (free trial
available)

Pros

- Integration with Microsoft and third-party tools
- User-friendly interface
- Scalable as your business grows
- Advanced customisation options
- Robust reporting
- AI-powered

Cons

- A general ERP, meaning it may not be as in-depth in specific areas as a specialised solution
- Learning curve for those not familiar with Microsoft

Ideal for:

- SMBs seeking a scalable, customisable ERP



Key features:

- Some Financial Management tools
- Some Human Capital Management tools
- Supply Chain Management
- CRM
- Some Project Management tools
- Good customisation options
- Some automation
- Advanced analytics

Around
£1,700
per user,
per year
(free trial
available)

Pros

- Rich features for manufacturers, covering core tasks
- Get real-time analytics to support decision-making
- Modular approach so you pay for what you need
- Good level of customisation

Cons

- Missing features outside of manufacturing sphere
- Few third-party integrations
- Make take time to get used to
- Only some automation options

Ideal for:

- SMB manufacturers who want to improve their process efficiency and get access to real-time analytics





Microsoft Dynamics 365 Business Central

Key features:

- Financial Management
- Human Capital Management
- Supply Chain Management
- CRM
- Project Management
- Advanced customisation options
- AI-powered insights
- Automation
- IoT integration
- Advanced analytics

Pros

- Integration with Microsoft and third-party tools
- User-friendly interface
- Scalable as your business grows
- Advanced customisation options
- Robust reporting
- AI-powered

Cons

- A general ERP, meaning it may not be as in-depth in specific areas as a specialised solution
- Learning curve for those not familiar with Microsoft

Ideal for:

- SMBs seeking a scalable, customisable ERP

From
**£57.50 -
£82.20**
per user, per
month (free trial
available)



Key features:

- Financial Management
- Some Human Capital Management tools
- Some Supply Chain Management tools
- Some CRM tools
- Some Project Management
- Some customisation options
- Some automation
- Advanced analytics

Pros

- Automatic bank feeds save time on manual data entry
- Easy to learn and use, even for those without accounting expertise
- A variety of financial reports to analyse business performance
- Seamlessly integrates with other business apps, like payment gateways and CRM software

Cons

- It may not offer the same level of flexibility as other ERP solutions
- It lacks many core ERP features, meaning you'll likely need to invest in more tools
- Only covers simple accounting so may not provide the functionality your business needs

Ideal for:

- SMB manufacturers who want to improve their process efficiency and get access to real-time analytics

From
£16 - £59
per month
(free trial
available)

VS





Microsoft Dynamics 365 Business Central

Key features:

- Financial Management
- Human Capital Management
- Supply Chain Management
- CRM
- Project Management
- Advanced customisation options
- AI-powered insights
- Automation
- IoT integration
- Advanced analytics

From
**£57.50 -
£82.20**

per user, per month (free trial available)

Pros

- Integration with Microsoft and third-party tools
- User-friendly interface
- Scalable as your business grows
- Advanced customisation options
- Robust reporting
- AI-powered

Cons

- A general ERP, meaning it may not be as in-depth in specific areas as a specialised solution
- Learning curve for those not familiar with Microsoft

Ideal for:

- SMBs seeking a scalable, customisable ERP

VS



Key features:

- Some Financial Management tools
- Human Capital Management
- Some Supply Chain Management tools
- CRM
- Project Management
- Good customisation options
- Some automation
- Advanced analytics

Reportedly start from
£35
per user, per year (free trial available)

Ideal for:

- Large organisations with complex HR needs

Pros

- Powerful analytics tools to gain insights into business performance
- Plenty of integration opportunities with third-party apps
- AI features built in to automate tasks
- Great for human capital management

Cons

- Can be complex to implement, especially for large organisations
- Missing some core ERP functionality outside of human capital management
- Can be costly for larger deployments
- Not as customisable as other ERPs



Microsoft Dynamics 365 Business Central

Key features:

- Financial Management
- Human Capital Management
- Supply Chain Management
- CRM
- Project Management
- Advanced customisation options
- AI-powered insights
- Automation
- IoT integration
- Advanced analytics

Pros

- Integration with Microsoft and third-party tools
- User-friendly interface
- Scalable as your business grows
- Advanced customisation options
- Robust reporting
- AI-powered

Cons

- A general ERP, meaning it may not be as in-depth in specific areas as a specialised solution
- Learning curve for those not familiar with Microsoft

Ideal for:

- SMBs seeking a scalable, customisable ERP

From
£57.50 -
£82.20
 per user, per
 month (free trial
 available)



Key features:

- Financial Management
- Human Capital Management
- Supply Chain Management
- CRM
- Project Management
- Good customisation options
- AI-powered insights
- Automation
- IoT integration
- Advanced analytics



Not publicly
 available (reviews
 suggest on
 expensive side)

Ideal for:

- Businesses who want a specific solution that focuses purely on their industry

Pros

- Industry-specific options allow fast deployment and specialised functionality
- Strong analytics tools for reporting
- Good customisation options, including numerous integrations

Cons

- Being highly specialised won't work if you need a catch-all solution
- Can be costly
- Can be complex to implement
- Separate modules mean there is no catch-all solution